

# Melamine Cabinetry

End Panels	5/8" or 3/4" engineered (particleboard) panels laminated with high quality melamine. Finished cabinet ends have your choice of veneer, laminate or melamine.
Cabinet Tops, Bottoms and Rails	5/8" or 3/4" engineered (particleboard) panels laminated with high quality melamine on both faces. Machined, inserted with 8mm wood dowels. All upper cabinet bottoms are finished in coordinating color.
Cabinet Backs	1/8" hardboard material available in white or maple melamine sized to fit in grooved cabinet components.
Shelves	5/8" or 3/4" engineered (particleboard) panels laminated with high quality melamine on both sides. Shelves are fully adjustable in wall and base cabinets.
Toekick	We use our standard 4 1/2" x 4 1/2" toe kick notch on all 5/8" or 3/4" cabinet boxes.
Drawer Box Construction	Any of our drawer systems can be used in our melamine cabinetry construction.
Hardware	Blum® fully concealed, clip on hinges with a 6 way adjustment. All drawer boxes except Blum Meta-box receive full under mount Tandem Blum slides with six way adjustment. All hinges and slides include a lifetime warranty.
Edge Banding	Color coordinated PVC, veneer, laminate, or DLV.
Assembly	Finished cabinet ends are assembled with glued dowels only. Non finished ends are assembled with glued dowels and screws. All cabinets are machine pressed with backs stapled while in the press to ensure a tight square fit.

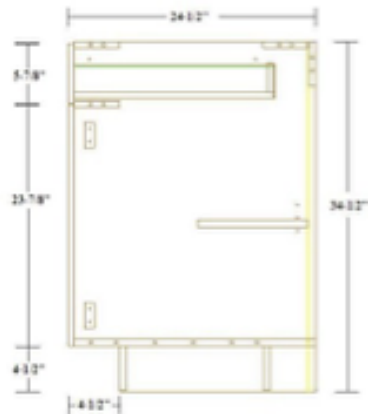


# Maple or Birch Plywood Cabinetry

End Panels	5/8" or 3/4" plywood prefinished UV-coated panels. All finished ends have your choice of veneer or laminate.
Cabinet Tops, Bottoms and Rails	5/8" or 3/4" plywood prefinished UV-coated panels on both sides. Machined, inserted with 8mm wood dowels. All upper cabinet bottoms are finished in coordinating color.
Cabinet Backs	1/4" plywood prefinished UV-coated and sized to fit in cabinet components with the option. For your wall hung cabinets we offer a solid plywood back option.
Shelves	5/8" or 3/4" plywood prefinished UV-coated panels on both sides. Shelves are fully adjustable in wall and base cabinets.
Toekick	We use our standard 4 1/2" x 4 1/2" toe kick notch on all of our 5/8" or 3/4" cabinet boxes. Exposed face has your choice of laminate or veneer.
Drawer Box Construction	Any of our drawer systems can be used in our plywood cabinetry construction.
Hardware	Blum® fully concealed, clip on hinges with a 6 way adjustment. All drawer boxes except Blum Meta-box receive full under mount Tandem Blum slides with six way adjustment. All hinges and slides include a lifetime warranty.
Edge Banding	Color coordinated PVC, veneer, laminate, or DLV.
Assembly	Finished cabinet ends are assembled with glued dowels only. Non finished ends are assembled with glued dowels and screws. All cabinets are machine pressed with backs stapled while in the press to ensure a tight square fit.

## CABINET SPECIFICATIONS

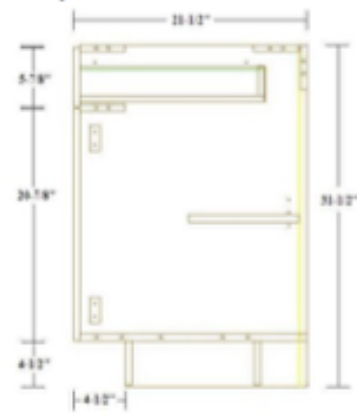
**Base Cabinet Cross Section View**



**Dimensions**

Widths: 6" – 48"  
Height: 34-1/2"  
Depth: 23-3/4" (24-1/2" with fronts)

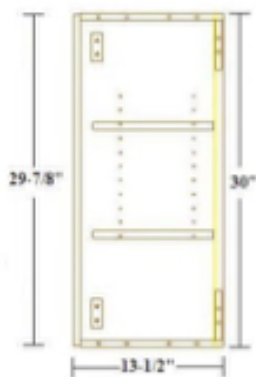
**Vanity Cabinet Cross Section View**



**Dimensions:**

Widths: 9" – 48"  
Height: 31-1/2" or 34-1/2"  
Depth: 20-3/4" (21-1/2" with fronts)

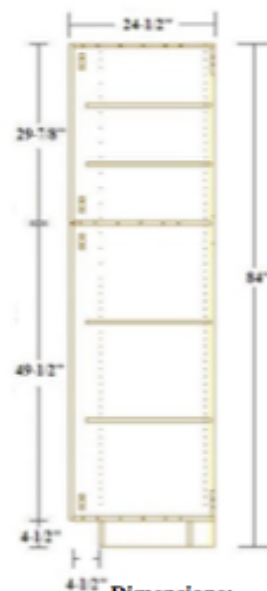
**Wall Cabinet Cross Section View**



**Dimensions**

Widths: 6" – 48"  
Height: 12" - 54"  
Depth: 12-3/4" or 23-3/4"  
(13-1/2" or 24-1/2" with fronts)

**Tall Cabinet Cross Section View**



**Dimensions:**

Widths: 12" – 36"  
Height: 84" – 96"  
Depth: 12-3/4", 20-3/4", or 23-3/4"  
(13-1/2", 21-1/2", or 24-1/2" with fronts)